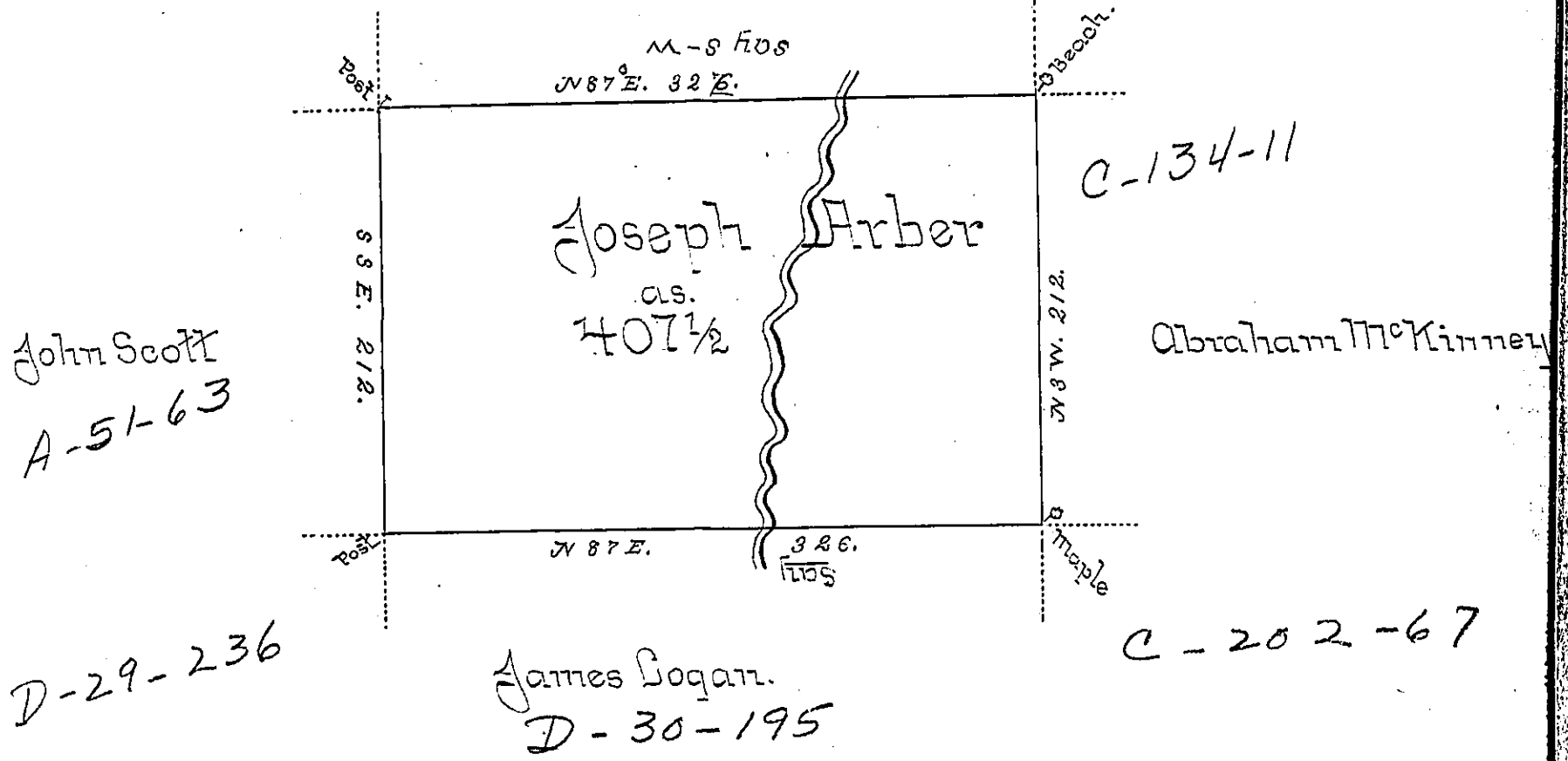


Cath<sup>n</sup> Coalman



A Draught of a tract of land called \_\_\_\_\_ Situate on the Waters of Junkhannock Creek joining land Survey for Cathrine Coleman and others in Stoke Township North<sup>d</sup> County Containing four Hundred & Seven Acres  $\frac{1}{2}$  and Allowance of Six Percent for Loads &c. Survey for Joseph Arbour the 23<sup>d</sup> Day of Sep<sup>r</sup> 1785 in pursuance of a Warrant Dated the 22<sup>d</sup> Day of Feb<sup>r</sup> 1785

by Wm Gray D.S.

To John Lukens Esq<sup>r</sup> }  
 Survey Gen<sup>l</sup> }

IN TESTIMONY that the above is a copy of the original remaining on file in the Department of Internal Affairs of Pennsylvania, made conformably to an Act of Assembly approved the 16th day of February, 1833, I have hereunto set my Hand and caused the Seal of said Department to be affixed at Harrisburg, this \_\_\_\_\_ second \_\_\_\_\_ day of \_\_\_\_\_ February \_\_\_\_\_ 1897.

*James W. Fetta*  
 Secretary of Internal Affairs.